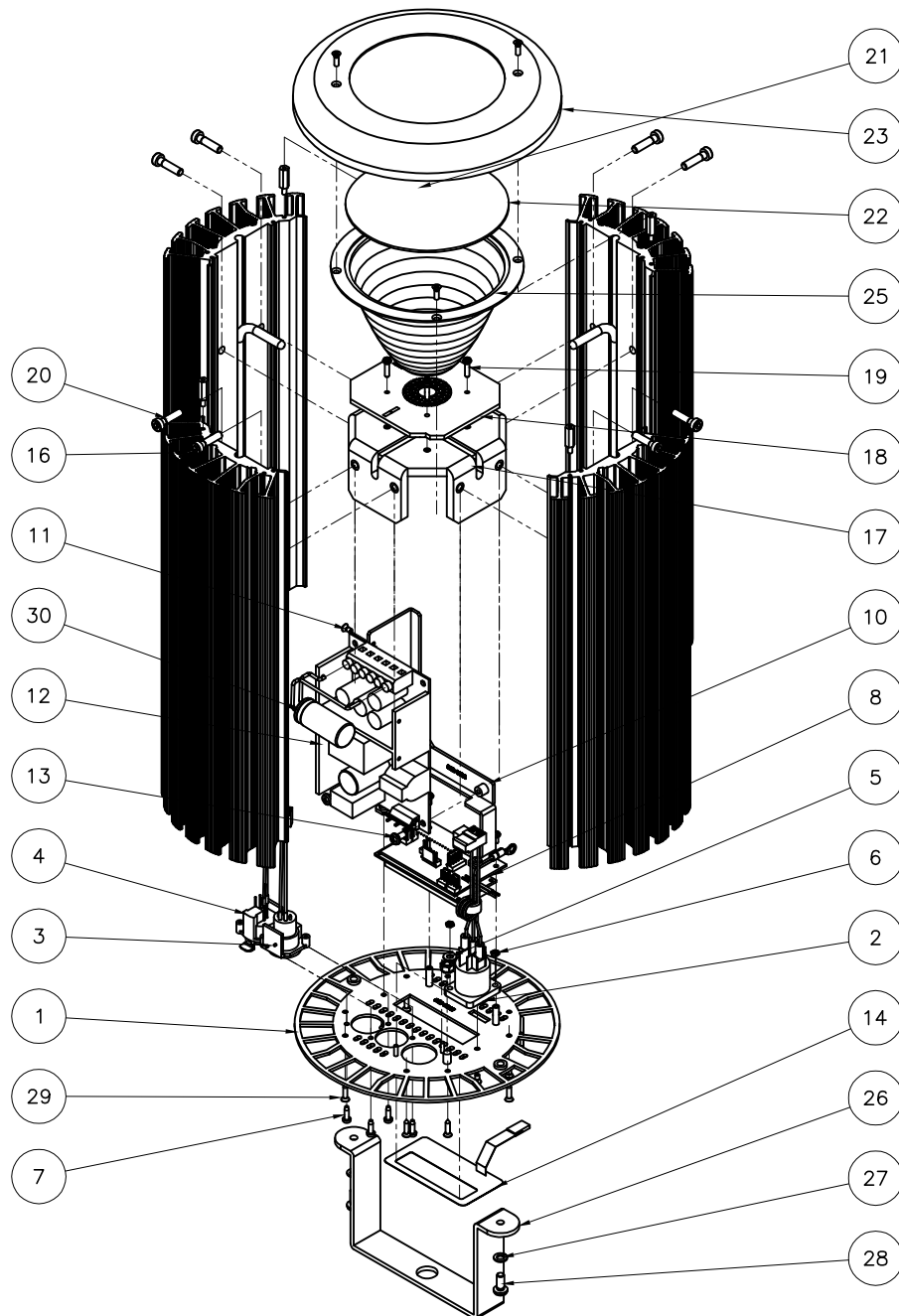


REV D

## CHROMA-Q INSPIRE

**NOTE:**

- LENS DEPENDING ON THE UNIT TYPE:  
 FOR NARROW UNIT: 631-0021  
 FOR MEDIUM UNIT: 631-0023

30	HARNESS CAPACITOR NOISE	900-0302	1
29	SCREW SELF TAP FH PZDV BLK ST2.9x13	429-6113-9	8
28	SCREW M5x12 PH PLPS BLK	450-1212-0	2
27	WASHER LOCK M5	450-2809-4	2
26	BRACKET HANDLE HOUSE LIGHT	631-0005	1
25	REFLECTOR PARABOLIC COATED	632-0505	1
24	STDOFF M-F M3x15x7, 6mm STUD	430-4115-1	4
23	CAP HOUSE LIGHT BLACK ANODIZED	632-0506	1
22	LENS NARROW, MEDIUM OR WIDE	LENS	1
21	SCREW M3x10 FH PLPS BLK	430-1110-0	4
20	SCREW M5x20 SHCS ST	450-1420-4	8
19	SCREW M3x12 PH PLPS Blk	430-1212-0	5
18	PCB COMPLETE LED CQ INSPIRE ADDR	632-0101	1
17	BRACKET PCB SUPPORT HEAT PIPE	632-0001	1
16	S/A EXTRUSION W/ HEAT PIPE	631-0035	4
15	NUT HEX M5 COMBI Zn	450-3205-1	1
14	OVERLAY COLOR CHARGE	618-0011	1
13	SCREW M4x8 PH PLPS BLK	440-1208-0	2
12	S/A PSU WITH HARN CAP, PAD AND SILICONE RUBBER 22V 6.0A	632-0406	1
11	SCREW M3x6 FH PLPS Blk	430-1106-0	4
10	BRACKET PSU HOUSE LIGHT	632-0003	1
9	SCREW M3x6 PH PLPS Blk	430-1206-0	2
8	PCB COMPLETE ADDRESSING HL	631-0040	1
7	SCREW M3x10 PH PLPS BLK Plastite	429-1208-9	4
6	NUT HEX M2.5, 5.5mm AF, Zn PLATED	425-3102-1	2
5	WASHER FLAT M4 Zn	440-2109-1	1
4	HARNESS XLR5-F	609-0008	1
3	HARNESS XLR5-M	609-0007	1
2	HARNESS POWER IN	631-0007	1
1	BACK PLATE HL INSPIRE ADDRESSING	632-0002	1
ITEM	DESCRIPTION	PART#	QTY

Parts List

**DISCLAIMER:** Dimensions and illustrative drawings contained herein are accurate to the company's knowledge at the time of printing, however specifications are subject to change without notice